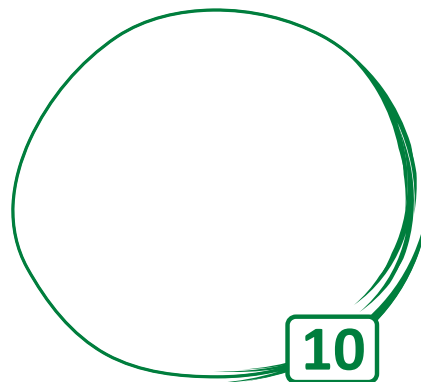
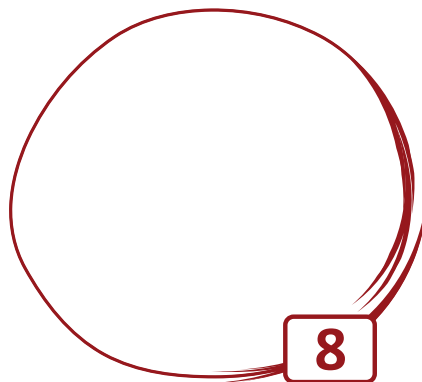
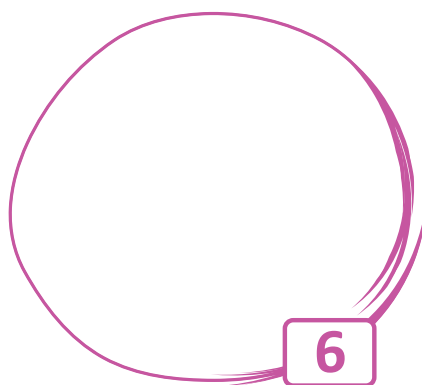
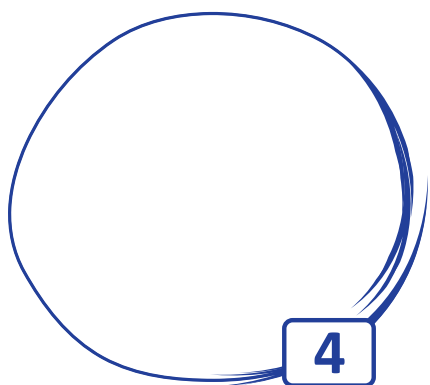


KARTKÓWKA LICZMANKA 6

1.



2.

$$10 + 2 = \dots\dots\dots$$

$$8 + 1 = \dots\dots\dots$$

$$5 + 4 = \dots\dots\dots$$

$$2 + 6 = \dots\dots\dots$$

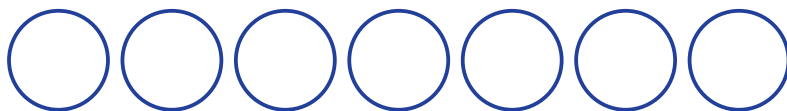
$$8 + 4 = \dots\dots\dots$$

$$7 + 5 = \dots\dots\dots$$

3.



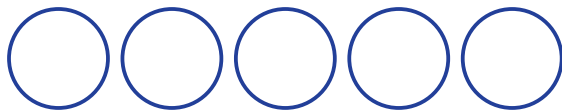
$$10 - 6 = \dots\dots\dots$$



$$7 - 4 = \dots\dots\dots$$



$$4 - 3 = \dots\dots\dots$$



$$5 - 2 = \dots\dots\dots$$

4.

2	
----------	--

1	
----------	--

3	
----------	--

5.





KARTKÓWKA LICZMANKA 6

1. Narysuj w każdej pętli tyle kólek, ile wskazuje liczba. /4, 6, 8, 10/
2. Wykonaj działania: $10+2=$, $8+1=$, $5+4=$, $2+6=$, $8+4=$, $7+5=$.
3. Skreśl tyle kólek, ile odejmujesz. Wpisz wynik. $10-6=$, $7-4=$, $4-3=$, $5-2=$
4. Wpisz w puste okienka taką liczbę, aby po dodaniu obu liczb wynik wyniósł 12.
/2 i ..., 1 i ..., 3 i .../
5. Dorysuj tyle trójkątów, aby było po tyle samo.