

Karta powtórzeniowa nr 2

Imię i nazwisko ucznia:

Klasa:

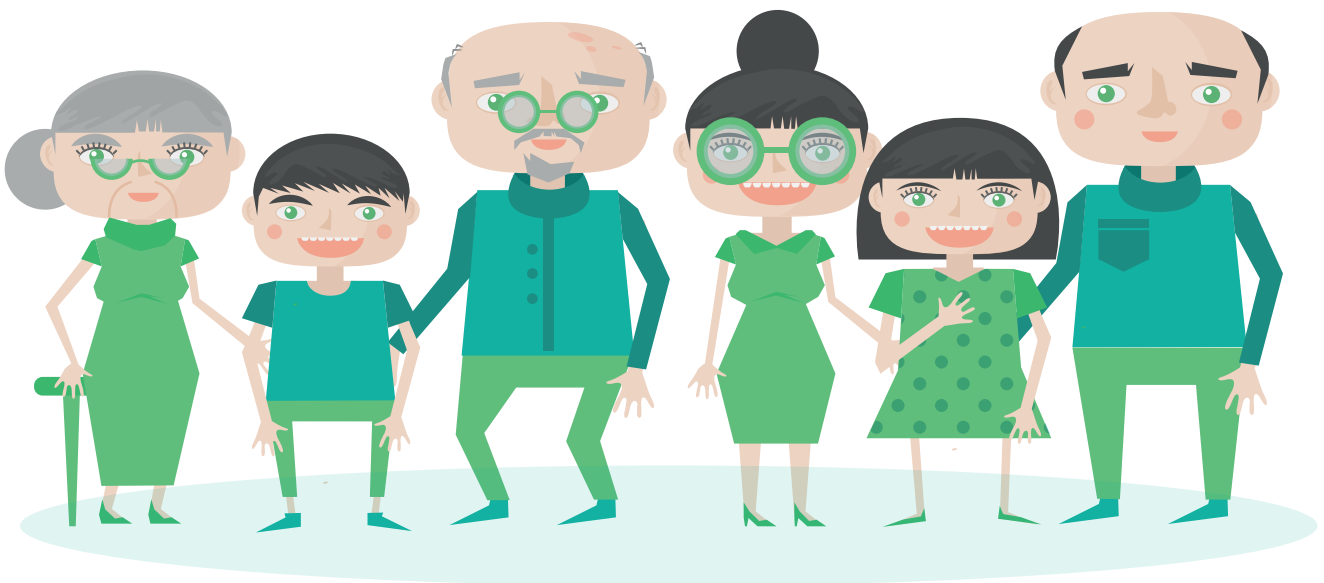
Data:

Wynik: / 25

Zadanie 1

Połącz wyrazy z prawidłową osobą na rysunku:

grandpa	granma	mother	brother	father	sister
---------	--------	--------	---------	--------	--------



Zadanie 2

Dopisz liczbę mnogą do podanych wyrazów:

One brother – two

One sister – two

One grandma – two

One grandpa – two

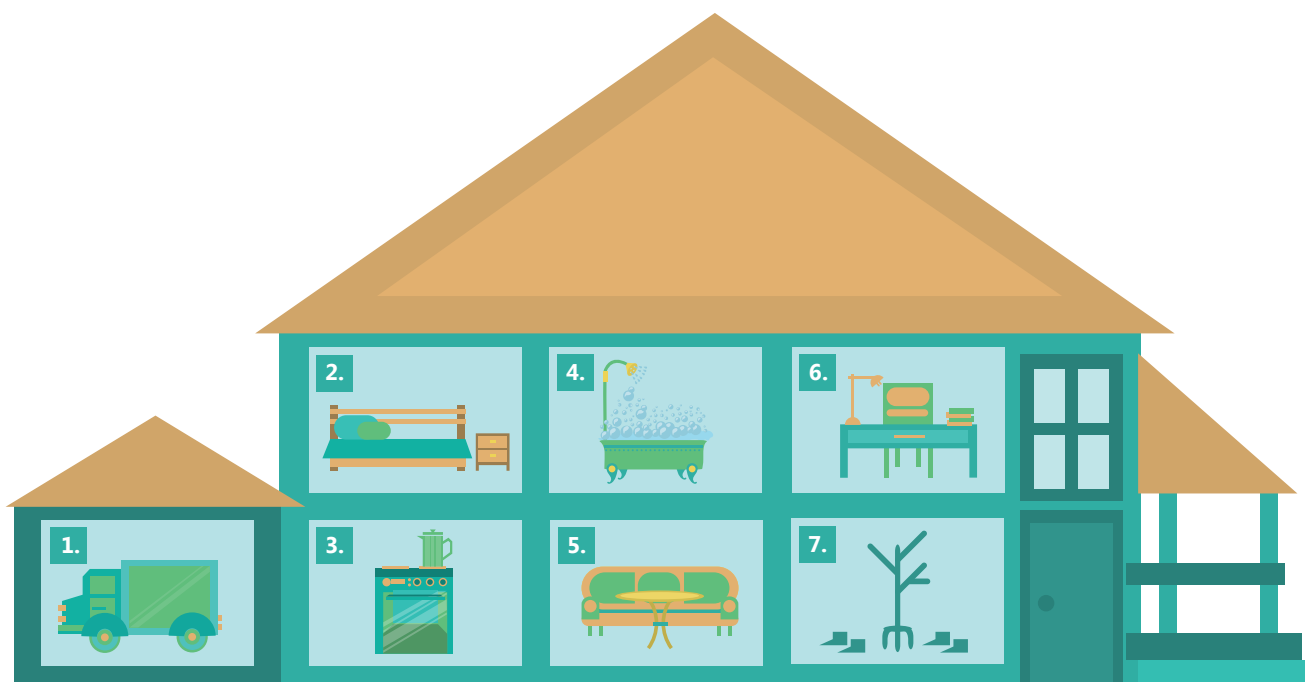
One father – two

One mother – two

One uncle – two

Zadanie 3

Wpisz przy nazwach pomieszczeń prawidłową cyfrę z rysunku:



bedroom

kitchen

bathroom

study

living room

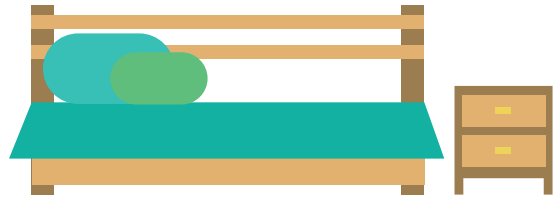
hall

garage

Zadanie 4

Przeczytaj zdania i zakreśl poprawny wyraz:

It's in the garden / bedroom.



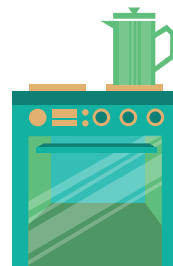
It's in the hall / bathroom.



It's in the garage / living room.



It's in the kitchen / study.



Zadanie 5

Wykreśl wyraz, który nie pasuje do pozostałych:

- | | | | | |
|----|----------|---------|------|---------|
| 1. | bathroom | bedroom | ball | kitchen |
|----|----------|---------|------|---------|
- | | | | | |
|----|-------------|----------|-------|-----|
| 2. | living room | bathroom | study | cat |
|----|-------------|----------|-------|-----|
- | | | | | |
|----|------|--------|--------|---------|
| 3. | hall | cheese | garage | kitchen |
|----|------|--------|--------|---------|
- | | | | | |
|----|--------|--------|-------|--------|
| 4. | mother | father | paper | sister |
|----|--------|--------|-------|--------|

