

## Test sprawdzający nr 1

Imię i nazwisko: .....

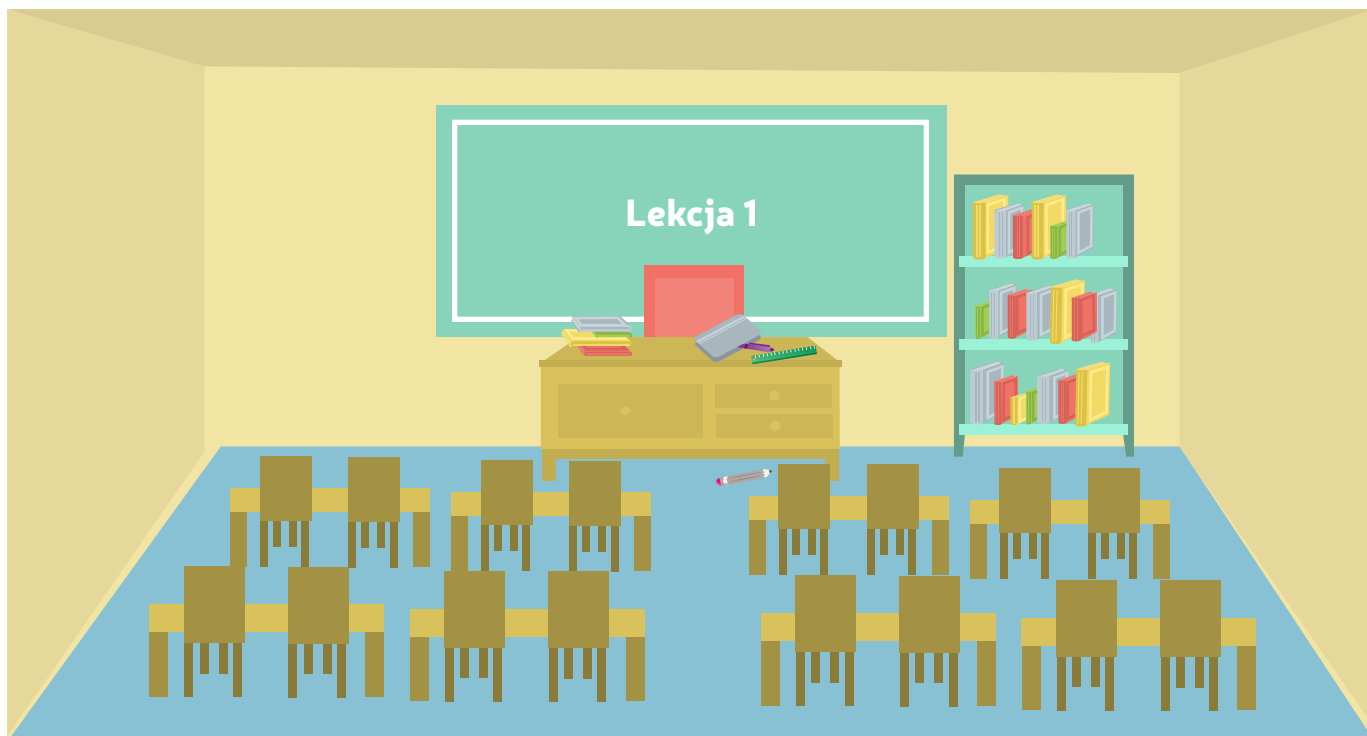
Klasa: .....

Data: .....

Wynik: .... / ....

### Zadanie 1

Spójrz na obrazek i zakresł wyraz TRUE, jeśli zdanie jest prawdziwe, lub FALSE, jeśli zdanie jest fałszywe.



<b>There is a bookcase next to the whiteboard.</b>	<b>TRUE / FALSE</b>
<b>There is a ruler in the pencil case.</b>	<b>TRUE / FALSE</b>
<b>There is a pencil under teacher's desk.</b>	<b>TRUE / FALSE</b>
<b>There are eight desks for students and sixteen chairs.</b>	<b>TRUE / FALSE</b>

## Zadanie 2

Uzupełnij luki w pocztówce z wakacji do przyjaciela na podstawie obrazków:

Hi Mike,

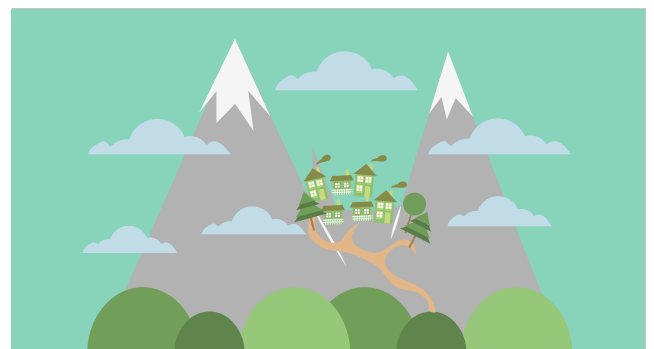
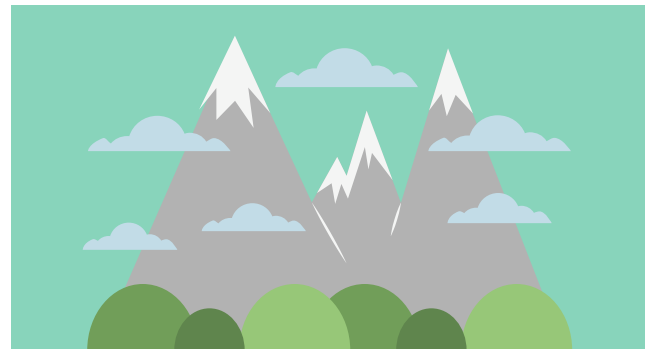
How are you?

I'm really OK. I'm on holiday with my (1) ..... . We are in the (2) ..... .  
We're staying in a small and very nice (3) ..... in the center of a lovely (4)  
..... . Everyone is nice and friendly. The only problem are our neighbours  
from the room next door. They are (5) ..... and (6) .....

I have to go now.

Hughs from Zakopane,

Tomek



### Zadanie 3

Połącz linią znaki drogowe z ich opisem:



This road sign is round. It's red on the outside and white inside. There's a black car in the middle of the sign.



This road sign is round. It's red. There's a white rectangular element in the middle.



This road sign is rectangular. It's blue and white. There's a black bed in the middle of the sign.



This road sign is round. It's blue. There's a white bike in the middle of the sign.

## Zadanie 4

Przeczytaj zdania i uzupełnij luki nazwami miast z mapy:



**This city is at the seaside in the North of Poland.**

.....

**This city is in the East of Poland.**

.....

**This city is in the center of Poland. This is the capital of our country.**

.....

**This city is in the mountains in the South of Poland.**

.....

**This city is in the West of Poland.**

.....



